



www.klinkeritalia.com

Ventilated facade system

Why extruded ventilated facade?

Ventilated façade is a constructive solution for the envelope of the building with an open air chamber that allows internal air circulation. Known as “chimney effect”, the result is an increase of acoustic and thermal insulation in the interior of the building.



Energetic efficiency.

The choice of the constructive solution of ventilated façade optimizes and reduce energy consumption by eliminating most thermal bridges, reaching, in specific situations, energy savings over 30%.



High performance.

Extruded panels offer a high mechanical resistance due to their thickness and honeycomb structure as well as the lack of any mechanization, incisions or any other manipulations.



Sostenibility.

Due the organic origin of clay, our products have a low environmental impact throughout their whole cycle of life. From manufacturing to final installation no toxic waste or products results to be.



Durability.

Normal use and regular maintenance of panels increases durability of the building since our system avoid humidity condensations in the interior extending the life of the building.



Increase acoustic performance.

Absence of acoustic bridges results in a reduction of interiors noise transmission improving the insulation. Moreover, the higher absorption generated by the air chamber helps reducing the time of reverberation and improving acoustic conditions.



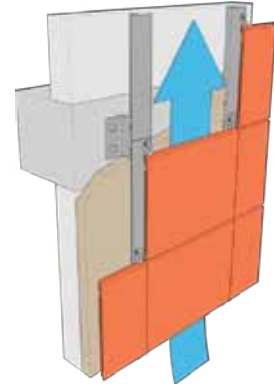
No contribution of fire.

No contribution to fire is one important feature.





Benefits



Design

Favemanc offers a wide range of formats, special pieces, finishes and colors including the inkjet technology. Our systems are installed with an invisible metallic mounting system.

Functionality.

Our fixing systems are entirely mechanical with low maintenance, easy cleaning and antigraffiti properties in most cases. In addition, we offer a product line with formats specifically designed for refurbishing projects

Solutions for a sustainable construction.

Our exclusive coating Active Plus brings social benefits and sustainability to the building industry with its main three effects: decontaminant, antibacterial and self-cleaning.



Refurbishment

Modular frame system along with a broad range of sizes makes it suitable for renovation of existing buildings that look not only for an improvement of visual aspect but also for the increase of their energetic efficiency.



Cleaning.

Mechanical installation of Favemanc systems means ~~that works is done~~ at factory therefore, handling on site is very limited and clean.



Quick Execution.

Modular installation with mechanical sources means results in execution time saving of installation teams, increasing their productivity of those and reducing the economic impact.



Reduction of waste.

Dry installation of elements means cleaner work areas as well as an important reduction of waste management costs.



Conciliation of works Vs building operation.

In case of reburbishing of buildings, one of the biggest advantages of our systems is that the use and operation of interior spaces is not interrupted during renovation works.



DECONTAMINANT EFFECT

The photocatalytic effect contributes to reducing air pollution, mainly on nitrogen oxide (NOx), through two actions described below.

- By direct action: Reduction of harmful gaseous substances (nitrogen oxide (NOx) as benzene, toluene, etc.) produced by human activity (Industries, Automobiles, heating, etc.). Degradation of the macromolecule (NOx) backed by laboratory according to EN 221 971.
- For indirect action: By destroying pollutants ozone precursors (NOx), with the formation of ozone (O3).

Color chart

Plain glazed



F21 Nieve *



F11 Tabaco



F25 Rojo



F19 Turquesa



F04 Gris Cemento *



F05 Ibiza *



F43 Braun



F56 Rojo Mate



F24 Verde



F32 Gris Miró



F29 Kuwait



F03 Arena



F20 Celeste



F44 Verde 6019



F42 Gris India



F30 Blanco Corea



F01 Aldonza



F35 Azul Argel



F45 Verde 6024



F17 Gris Marengo *



F28 Beige Milán



F13 Terracota *



F46 Verde 6029



105 Gris Barcelona



F23 Albergo



F14 Serna



F16 Grafito



F02 Antracita *

Stone



F52 White Stone



F15 Riansares *



F12 Tajo



F54 Zarauz



F53 Bermeo

Wood



F49 Samara



F51 Tundra



F48 Volga



F50 Taiga

Metallic



F08 Metalizado Plata



F07 Metalizado Bronce

Natural (unglazed)



F55 Blanconat 9010 *



F36 Blanconat *



F41 Marfilnat *



F37 Grisnat *



F38 Tabaconat *



F33 Terranat *



F39 Negronat *





XB 15



Height	200 mm	7 7/8 in	300 mm	11 13/16 in	400 mm	15 1/2 in	
Length*	<600 mm	23 1/2 in	<900 mm	35 3/4 in	<900 mm	35 3/4 in	
Thickness	15 mm						0 19/32 in
Weight	23 kg/m ²						4.71 lb/sqft

* Maximum length available in 1 mm intervals.



XD 22



Height	200 mm	7 7/8 in	250 mm	11 13/16 in	300 mm	11 13/16 in	400 mm	15 1/2 in	500 mm	19 1/4 in	
Length*	<900 mm	35 3/4 in	<1500 mm	59 1/2 in	<1500 mm	59 1/2 in	<1500 mm	59 1/2 in	<1500 mm	59 1/2 in	
Thickness	22 mm										0 7/16 in
Weight	33 kg/m ²										7.37 lb/sqft

* Maximum length available in 1 mm intervals.



XB PRO 17



Height	300 mm	11 13/16 in	400 mm	15 1/2 in	
Length*	<1200 mm	47 1/4 in	<1200 mm	47 1/4 in	
Thickness	17 mm				0 69/64 in
Weight	25.5 kg/m ²				5.32 lb/sqft

* Maximum length available in 1 mm intervals.

Design Series

XA Design

Width	300 mm	11 13/16 in
Length	<1400 mm	55 1/4 in
Thickness	30 mm	1 1/4 in
Weight	44 kg/m ²	8.36 lb/sqft



XB Design

Width	300 mm	11 13/16 in
Length	<900 mm	35 3/4 in
Thickness	19 mm	3/4 in
Weight	29 kg/m ²	5.94 lb/sqft



XB PRO Design

Width	300 mm	11 13/16 in
Length	<1200 mm	47 1/4 in
Thickness	17 mm	69/64 in
Weight	25 kg/m ²	5.1 lb/sqft



XD Design

Width	300 mm	11 13/16 in
Length	<1200 mm	47 1/4 in
Thickness	24 mm	1 1/4 in
Weight	39 kg/m ²	8 lb/sqft



Close work between customers, end users, designers and our technical and production teams results in spectacular jobs like the one in the picture.



XC 16



Height	300 mm	11 13/16 in	400 mm	15 1/2 in	
Length*	<1200 mm	47 1/4 in	<1200 mm	47 1/4 in	
Thickness	16 mm				0 5/8 in
Weight	23.5 kg/m ²				4.81 lb/sqft

* Maximum length available in 1 mm intervals.

Multifunctional Series

XB PRO CT

Width	300 mm	11 13/16 in
Length	<1200 mm	47 1/4 in
Thickness	17 mm / 65 mm	0 69/64 in
Weight	29 kg/m ²	5.9 lb/sqft



XD CT

Width	300 mm	11 13/16 in
Length	<1200 mm	47 1/4 in
Thickness	24 mm	1 1/4 in
Weight	45 kg/m ²	9.2 lb/sqft



One of our competitive strengths is the capacity of personalization of tailor-made pieces according to conceptual criteria of architects.

Multifuncional I

Width	300 mm	11 ³ / ₁₆ in
Length	<1200 mm	47 ¹ / ₄ in
Thickness	66 mm	2 ⁵ / ₁₆ in
Weight	52 kg/m ²	10,65 lb/sqft



Multifuncional II

Width	300 mm	11 ³ / ₁₆ in
Length	<1200 mm	47 ¹ / ₄ in
Thickness	66 mm	2 ⁵ / ₁₆ in
Weight	52 kg/m ²	10,65 lb/sqft



Multifuncional III

Width	300 mm	11 ³ / ₁₆ in
Length	<1200 mm	47 ¹ / ₄ in
Thickness	66 mm	2 ⁵ / ₁₆ in
Weight	52 kg/m ²	10,65 lb/sqft



Oval slat - 150

Format	150 X 50 mm	5 ⁷ / ₁₆ x 1 ¹⁵ / ₁₆ in
Length	<1400 mm	55 ¹ / ₄ in
Weight	7 kg/m l	15,43 lb/lm



Oval slat - 250

Format	250x60 mm	9 ⁷ / ₁₆ x 2 ³ / ₁₆ in
Length	<1400 mm	55 ¹ / ₄ in
Weight	14 kg/m l	30,86 lb/lm



Oval slat - 316

Format	316x90 mm	12 ⁷ / ₁₆ x 3 ¹⁵ / ₁₆ in
Length	<600 mm	23 ¹ / ₄ in
Weight	19 kg/m l	41,4 lb/lm



Louvers are lineal elements that may be installed either vertically or horizontally.

One of our competitive strengths is the capacity of personalization of tailor-made pieces according to conceptual criteria of architects.

Square slat

Format	55 x 55 mm	2 ¹ / ₁₆ x 2 ¹ / ₁₆ in
Length	<1500 mm	59 ¹ / ₄ in
Weight	37 kg/m l	8 ¹ / ₂ lb/lm



Rectangular slat

Format	110 x 55 mm	4 ³ / ₁₆ x 2 ¹ / ₁₆ in
Length	<1500 mm	59 ¹ / ₄ in
Weight	7 kg/m l	15,45 lb/lm
Format	200 x 55 mm	7 ⁸ / ₁₆ x 2 ¹ / ₁₆ in
Length	<1500 mm	59 ¹ / ₄ in
Weight	11 kg/m l	24,25 lb/lm



Round slat

Format	50 mm Ø	1 ¹ / ₁₆ in Ø
Length	<1500 mm	59 ¹ / ₄ in
Weight	3 kg/m l	6,61 lb/lm



Oval XD slat

Format	78x118 mm	3 ¹ / ₁₆ x 4 ¹ / ₄ in
Length	<1500 mm	59 ¹ / ₄ in
Weight	6,34 kg/m l	13,97 lb



They can be combined in different formats and colors providing endless possibilities for the designer. The result is a qualitative leap in the design of spaces creating a feeling of exclusivity.

Louvers are a family of product that have different applications as solar control and exclusive design. They are used to cover open spaces of façades such as windows or hollows providing perfect integration with the panels used in the blind parts of them.